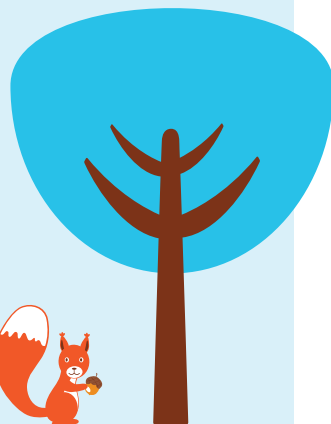


When a parent chooses an early care and education program, it is one of the most important decisions they will have made for their child's future up to that point. We realize the amount of trust that goes into that decision and consider it an honor to have the opportunity to participate in the development of your child. We are committed to having a significant and positive influence on every child entrusted in our care.

Our role as an early care and education program is to continue the care that our students receive at home. Your child's day starts at home with you, and ends when you kiss them goodnight and tuck them into bed. We are here to fill the hours that you are away with warmth and caring, fun and learning.

*Best,  
Beth Costanzo, M Ed.*

Director  
Woodland Place Childcare Center  
16 Gibbs Hill Drive  
Gloucester, MA. 01930  
978-491-0747  
bethcostanzo@hotmail.com  
woodlandplacechildcare.com



[www.woodlandplacechildcare.com](http://www.woodlandplacechildcare.com)

**A new kind of learning solution!**

## Mission Statement

To immerse children into a creative and engaging academic program that sparks curiosity and instills a sense of wonder and awe about the world around them.

Our environmentally based program strives to engender respect for all people while embracing the differences of others. Our staff is committed to building an environment that values children and is devoted to demonstrating the utmost commitment to social, civic, personal and environmental responsibility within our community and throughout the world.



## Goals & Objectives

1. To provide loving care for all our children in a healthy, happy environment.
2. To provide both structured and unstructured periods of time throughout the day in order to develop the maximum mental, physical and social growth for each individual child.
3. To provide a trustworthy and responsible service for the parents of Gloucester and the surrounding communities.

## Registration/Enrollment Fee

A registration fee of \$75.00 is due at the time of your child's enrollment. Re-registration fees and new enrollment forms are due each September. Registration fees are non-refundable.



## Tuition

Full Day Program (6 or more hours)

Number of Days	Toddler Program	Pre-School Program
1 day	\$64.00	\$62.00
2 days	\$120.00	\$116.00
3 days	\$168.00	\$162.00
4 days	\$216.00	\$192.00
5 days	\$240.00	\$230.00

## Deposit

Woodland Place requires a one week, non-refundable deposit in addition to the registration fee. This deposit shall be applied to your child's last week of childcare. Woodland Place requires a written, two week notice prior to departure from the program.

## Weekly Workbook

Each week an additional \$5.00 will be added to your tuition payment for a workbook or storybook. This will be taken home weekly.



## We're Closed On:

Martin Luther King, Presidents Day, Memorial Day, Labor Day, Columbus Day, Veterans Day, Thanksgiving and the day after, Christmas Eve and Christmas Day, New Year's Eve and New Year's Day.  
(We are closed 4 weeks per year)

- Christmas Week-Begins Christmas Eve Day, and returning the day after New Year's.
- April Vacation
- 4th of July Week
- Last week of August before school begins.

## Non Discrimination Policy

In accordance with Federal Law, Woodland Place will not discriminate on the basis of race, religion, national origin, sex, age, disability, sexual preference, or other similar characteristics and circumstances.

Half Day Program (4 hours)

Number of Days	Toddler Program	Pre-School Program
1 day	\$44.00	\$40.00
2 days	\$80.00	\$76.00
3 days	\$114.00	\$108.00
4 days	\$144.00	\$136.00
5 days	\$170.00	\$160.00